

KALMOR®

Fungicide/Bactericide



AN EFFECTIVE FUNGICIDE/BACTERICIDE FOR PREVENTION AND CONTROL OF DISEASES IN GREENHOUSE AND ORNAMENTAL CROPS, FRUITS, VEGETABLES AND TREE CROPS

Product Information Bulletin

485

GENERAL INFORMATION

KALMOR® is an effective fungicide/bactericide for prevention and control of diseases on a variety of plants and crops.

KALMOR is a dry flowable formulation with 46% Copper Hydroxide.

Common Name: Copper Hydroxide

Class: Inorganic

GROUP	M1	FUNGICIDE
-------	----	-----------

Packaging: 2.5 lbs. bag, 4 per case

RESTRICTED ENTRY INTERVAL (REI) AND SIGNAL WORD

REI for Greenhouse Uses ONLY: **24 hours** with eye wash stations (refer to the container label for further information)

REI for Outdoor Uses and no eye wash station: **48 hours**

Signal Word: **Caution**

PERSONAL PROTECTION EQUIPMENT (PPE)

Mixers, loaders, applicators and other handlers must wear (see the container label for more detail):

- long-sleeved shirt and long pants
- socks and shoes
- waterproof gloves

MODE OF ACTION

KALMOR works at multiple sites. Absorbed copper disrupts the enzyme systems of the fungal and bacterial pathogens. **KALMOR** works both as a curative and a preventative fungicide. For best control, apply **KALMOR** when disease symptoms first begin.



USE SITES

KALMOR may be used on ornamental plants grown in commercial greenhouses and nurseries, and on conifers, vegetables, small fruits, nuts, etc. See the container label for all uses.

APPLICATION RATES

KALMOR may be applied as a foliar spray or drench on ornamental plants.

Apply **KALMOR** at 0.5 to 2.0 lbs. per 100 gallons over the area to be treated. See the container label for more details on application drench volumes for bench or potted plants.

Key Diseases Controlled

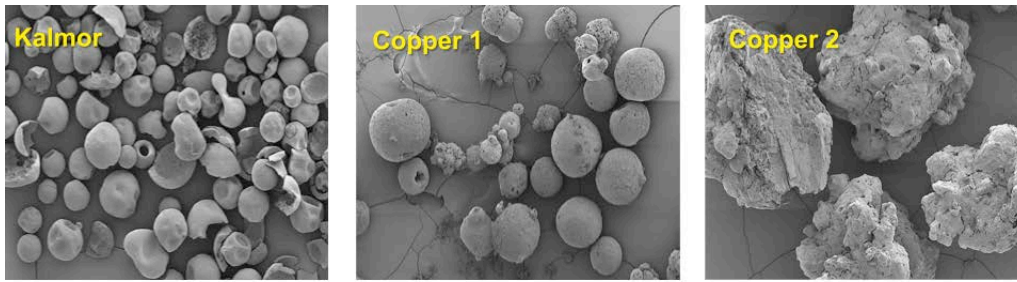
- Anthracnose
- Bacterial Leaf Spot and Blight
- Botrytis
- Fire Blight
- Fungal Leaf Spot

(see container label for complete list of diseases controlled)

TANK MIXING

Tank mixing is permitted with **KALMOR** for broader spectrum disease control. The pH of the mixed solution should be above 6.5 to minimize risk of phytotoxicity and crop damage. Do not tank mix with Areca™, Aliette® or other acid forming materials. Growers should test for compatibility and make sure to follow all directions and precautions on labels prior to application.

Copper products particle size comparisons



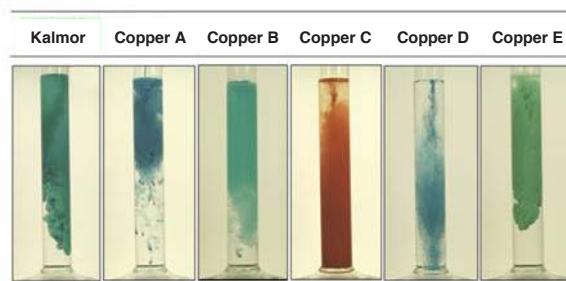
Understanding Copper Particle Size and Bio-Availability

- The **KALMOR** formulation has been optimized to provide high levels of bio-availability while at the same time reducing the copper load on the plants and environment.
- Bio-availability is the potential for copper ions to be accessible for dilution and biologically active against pathogens
- Large particles are more readily dislodged from plant surfaces by rain or irrigation
- Smaller particles, like those comprising **KALMOR**, adhere better and provide longer residual control
- Copper at 0.75 microns has 64 x more particles per pound than copper at 3.0 microns (Rosenberger, D., Cornell University)

KALMOR is a low solubility (insoluble) copper

- Fixed copper
- Spray solution of fixed copper: suspension of copper particles
- Particles persist on leaf surface after drying
- Gradual release of copper ions when particles react with water on the leaf surface
- Residual protection; reduces phytotoxicity to plant tissues

KALMOR Formulation Excellence



Use of Kalmor according to the labeling is subject to the use precautions and limitations imposed by the label affixed to the container of Kalmor. It is a violation of Federal law to use this product in a manner inconsistent with its labeling.

Areca and Kalmor are trademarks of OHP, Inc.
Aliette is a trademark of Bayer.

© OHP, Inc. 2019



PO Box 746, Bluffton, SC 29910-0746
Technical Service: (800) 356-4647
ohp.com